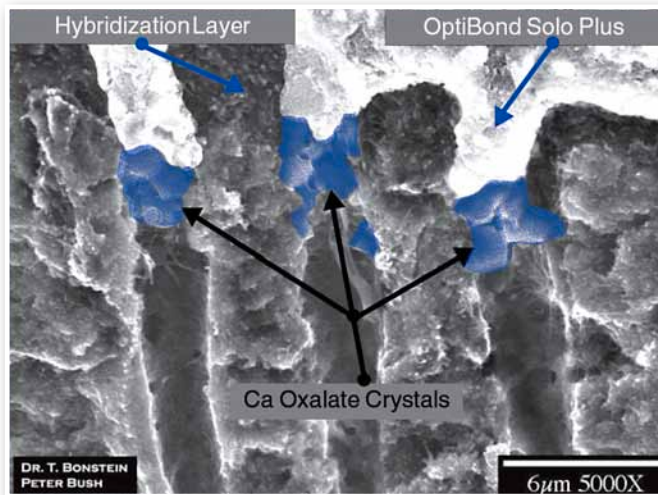


Is Sensitivity the Number One Complaint in Your Office? We Have the Answer.



Super Seal® may be used with today's adhesive systems.

Place Super Seal® first, as no etching is required before or after Super Seal® placement. You may then follow with the adhesive agent system of your choice.

Super Seal® is biologically compatible with soft tissue, works great after periodontal surgery, and may enhance tissue re-attachment.

“ Super Seal® has constantly decreased sensitivity without affecting the bond. ”

~ Rhys Spoor, DDS • Washington

Super Seal® will stop the
pain caused by
open tubules!



100% Money Back Guarantee!

For more information,
a free sample, or to place an order contact us at:



Phoenix Dental, Inc.
Better Dentistry Through Chemistry®

11224 Phoenix Drive, Fenton MI 48430 USA

Phone: 810.750.2328

Toll Free: 877.463.9905

Fax: 810.750.7495



Visit us at
www.PhoenixDental.com

The Dental Sensitivity Solution



It's fast. It's easy.
It simply works
with no pain!

- Desensitizer
- Re-wetting Agent
- Liner

Doctor Recommended
and Clinically Proven

Phoenix Dental, Inc.

Better Dentistry Through Chemistry®

SUPER SEAL® is a water-based potassium oxalate desensitizer. It is uniquely different from other desensitizers on the market. Super Seal® is not refrigerated, and for extra patient comfort, it can be warmed to body temperature or slightly above.



“ **Super Seal® is a tremendous addition to adhesive dentistry, and it takes the worry out of sensitivity. It truly acts as a desensitizer and re-wetting agent!** ”

~Arthur (Tony) Tomaro, DDS



“ **Super Seal® has been a product I've used for over 10 years. It is a multi-purpose product that makes my life easier-for better impressions, to rewet the dentin and desensitize when bonding, or just to treat my patients with sensitivity issues which are so common today. Super Seal® is the quick and easy solution.** ”

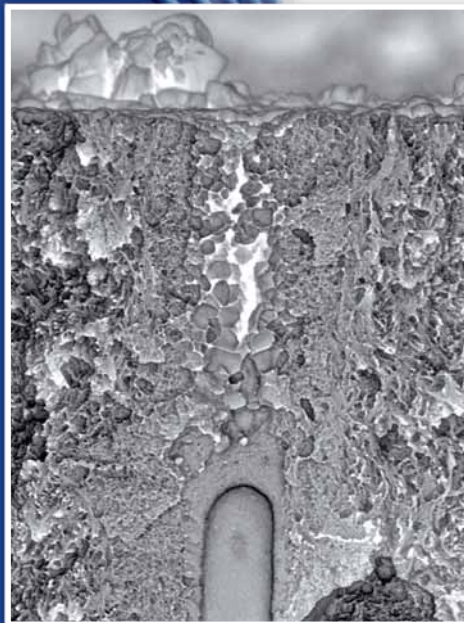
~ Michael A. Miyasaki, DDS

DIRECTIONS FOR USE

1. Place 1 to 2 drops of Super Seal® in the small well of any dish. More may be used depending on the clinical use and your personal restorative consideration.
2. Using forceps with a sterile cotton pellet or microsponge, saturate the applicator end with the Super Seal®.
3. Gently rub the saturated end over the affected area or cavity restoration surface for at least 5-secs or slightly longer as you wish so as to completely cover the entire tooth area. Super Seal® will NOT irritate any of the gingival or pulp tissues.
4. Once Super Seal® desensitizer solution is spread over all of the intended tooth tissue area, DO NOT DRY WITH A HARD BLAST OF AIR - The syringe air-tip must not be closer than 5-inches (18-cms) to the tooth-Super Seal® interface. PLEASE - only gently air-disperse for no more than 3-secs. You may leave the tooth surface moist for your bonding since Super Seal® does not alter the tooth collagen substrate. No light curing is needed. Any appearance of an opaque frosty-white surface indicates the chemical chelation reaction has occurred with blockage of the dentine tubule complex.

How Super Seal® Works:

Enamel, dentine & cementum are composed of high concentrations of alkaline calcium hydroxyapatite (CaHa). Super Seal® and CaHa react with each other, leaving a fine granular precipitate within the dentinal tubules at depths of 7-12 µm and on the surfaces of the vital dentin, enamel, and cementum. This precipitate is biologically bound to the vital dentin substrate, leading to a long lasting seal, preventing patient hypersensitivity & blocking bacterial penetration to the vital pulp. Super Seal® is water based and rewets the preparation surfaces before an impression, without leaving any film thickness to interfere with bonding procedures.



PUT A STOP TO DENTINAL HYPERSENSITIVITY

- No Glutaraldehyde
- No HEMA
- No Benzalkonium Chloride
- No Alcohol
- No Chlorahexadine
- No Mixing
- No Rinsing
- No Etching
- No Staining
- No PAIN

DOCTOR USES

- Periodontal Surgery
- Any Exposed Dentin
- Re-wetting Agent
- During Temporization
- Under Restorations
 - Amalgams
 - Composites
 - Crowns and Veneers
 - Inlays and Onlays

HYGIENIST USES

- Before and After Prophylaxis
- Thermal Sensitivity

ASSISTANT USES

- Before and After Bleaching
- Exposed Root Surfaces

Q Is Super Seal® FDA compliant? **A** YES!

Super Seal® has held an approved 510(k) since 1998. Phoenix Dental is compliant with FDA cGMP, and current good manufacturing practices. In addition, Phoenix Dental's quality management system is ISO 13485, CMDCAS (Canada) and JPAL (Japan) compliant. The product Super Seal® holds a CE mark (European Community) for conformity to the Medical Device Directive 93/42/EEC.

“ **I have a closet full of materials for sensitivity. I was amazed to find one that works consistently!** ”

~ John D. Harker, DDS
Indiana